

YOUR GUIDE *to* GRADUATING RIGHT INTO A

CHALLENGING REWARDING HIGH-
TECH HIGH-PAYING IN-DEMAND

CAREER

(WITHOUT THE
STUDENT DEBT)



THINK YOU'RE SMART ENOUGH TO GET INTO MANUFACTURING?

Today's manufacturers don't need human robots: they need people sharp enough to analyze data, troubleshoot devices, build prototypes, edit code, fix million-dollar machinery, navigate global supply chains, and find smarter ways to solve complex problems. It's not for everyone. But if you think you have what it takes, our pre-apprenticeship programs can help you find out if you really do.

How does a _____

PRE-APPRENTICESHIP

_____ *work?*



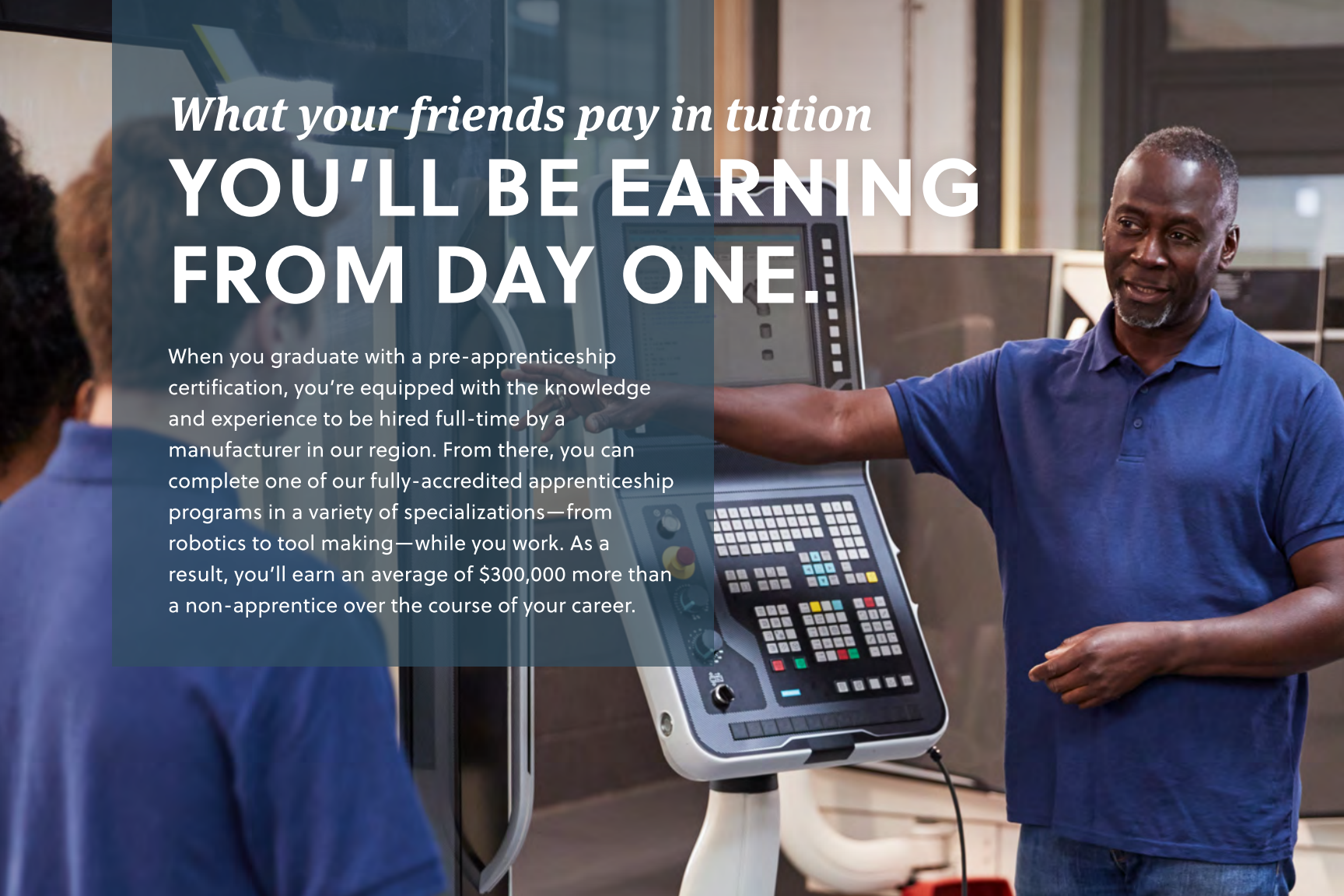
As a pre-apprentice, you'll be able to follow the same trade-specific paths as full-time apprentices, gaining specialized skills, professional connections, and a big head start in your manufacturing career.

Your guidance counsellor can help you find the program and courses that fit your interests.

What your friends pay in tuition

YOU'LL BE EARNING FROM DAY ONE.

When you graduate with a pre-apprenticeship certification, you're equipped with the knowledge and experience to be hired full-time by a manufacturer in our region. From there, you can complete one of our fully-accredited apprenticeship programs in a variety of specializations—from robotics to tool making—while you work. As a result, you'll earn an average of \$300,000 more than a non-apprentice over the course of your career.





A career in modern manufacturing **BY THE NUMBERS**

\$36,000

Average student loan debt for
PA college graduates

6 in 10

Skilled manufacturing positions
in America are vacant due to a
shortage of trained talent

\$72,735

Average salary in the US
Manufacturing sector

3 Million

Unfilled skilled manufacturing
jobs in the United States

Learn more about our Apprenticeship Program at

mascpa.org/apprenticeships

YOU CAN GET STARTED NOW.

**COURSES START IN THE FALL SEMESTER AND
ARE AVAILABLE TO ALL JUNIORS AND SENIORS.**

If you want to learn more about a pre-apprenticeship program, your guidance counselor can help.

MASCPA.org
(717) 843-3891

3405 Board Road
Suite 100
York, PA 17406

